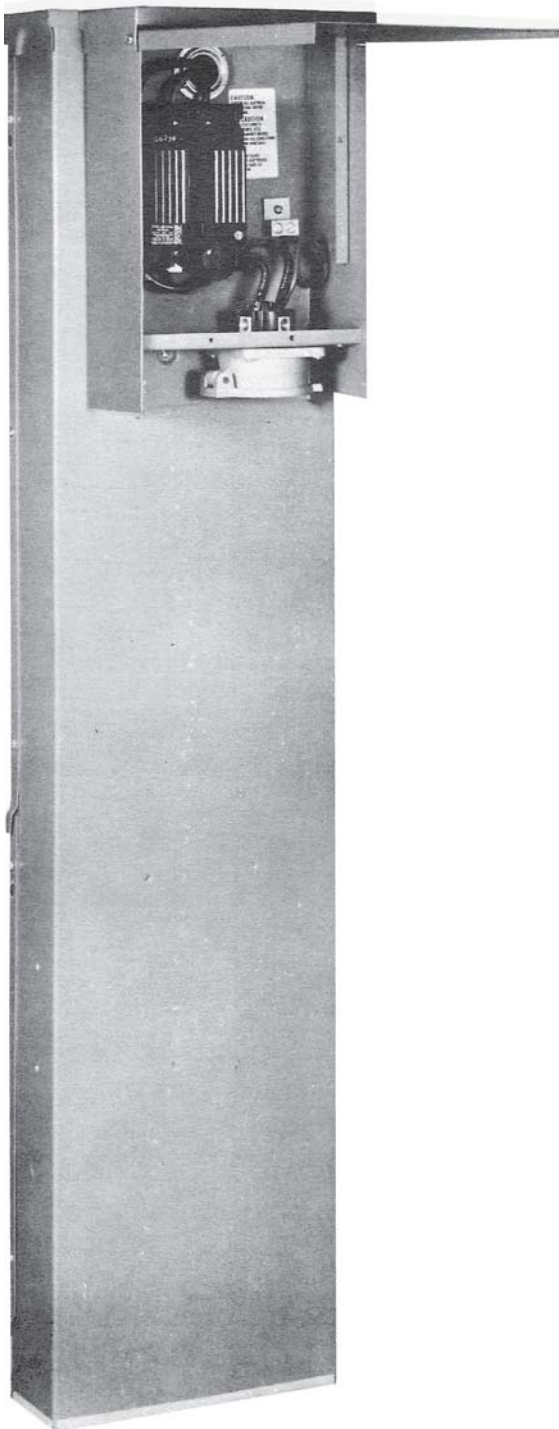




**ME-HP34TL  
ME-HP64TL**

Unmetered power outlets for snow machines.  
ME-HP34TL (30 amp) – ME-HP64TL (60 amp)



### STANDARD FEATURES

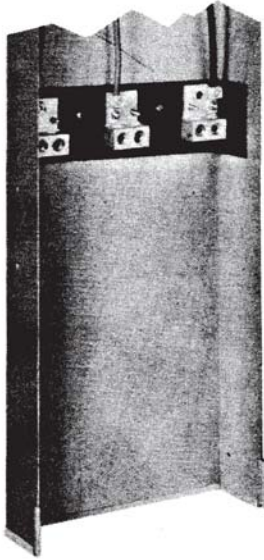
- One piece construction.
- Pre-wired at factory.
- 3-phase, 3-wire system to match snow machine requirements.
- Receptacle – rated 600 volts and to operate at 480 volts 3 $\phi$ , 3-wire.
- Receptacle installed under panel hinged cover – gasketed spring cover plate for additional safety.
- Twin 350 MCM lugs in raceway for power company's connection and a "feed through system".
- Pedestal - 14 gauge galvanized steel construction, 77" tall.
- Hinged cover has padlock provisions (tamperproof).
- Standard color: foliage green powder coat finish.
- All components U.L. Approved.

**CATALOG NO.:** ME-HP34TL – (30 amp)  
ME-HP64TL – (60 amp)

**RECEPTACLES:** Hubbelock (30 amp) No. 002045.  
Includes gasketed spring hinged cover plate.  
Hubbelock (60 amp) No. 00242.  
Includes gasketed spring hinged cover plate.

# INSTALLATION INSTRUCTIONS

- Remove upper terminal raceway cover. Lower raceway into trench, feeding wire up through raceway. It is suggested that the bottom of trench be puddled with two inches of concrete for the terminal raceway footing.
- Plumb and level unit.
- Backfill trench as required.
- Additional stability can be obtained by the use of a 2 x 4 form approximately 18" square placed around the pedestal and poured with concrete. Prevents sinking or heaving due to frost or wet situations.
- Connect service wires to 350 MCM AL-CU terminal lugs. The use of an inhibitor is suggested for aluminum wire.
- Make necessary grounding and bonding connections.
- Replace terminal raceway cover.



**TWIN 350 MCM LUGS IN RACEWAY FOR POWER COMPANY'S CONNECTION AND A "FEED THROUGH SYSTEM."**

**ST-4 INSULATED HUB**  
# 105-000

**3 POLE-30 AMP-480 VOLT CIRCUIT BREAKER**  
# 001082

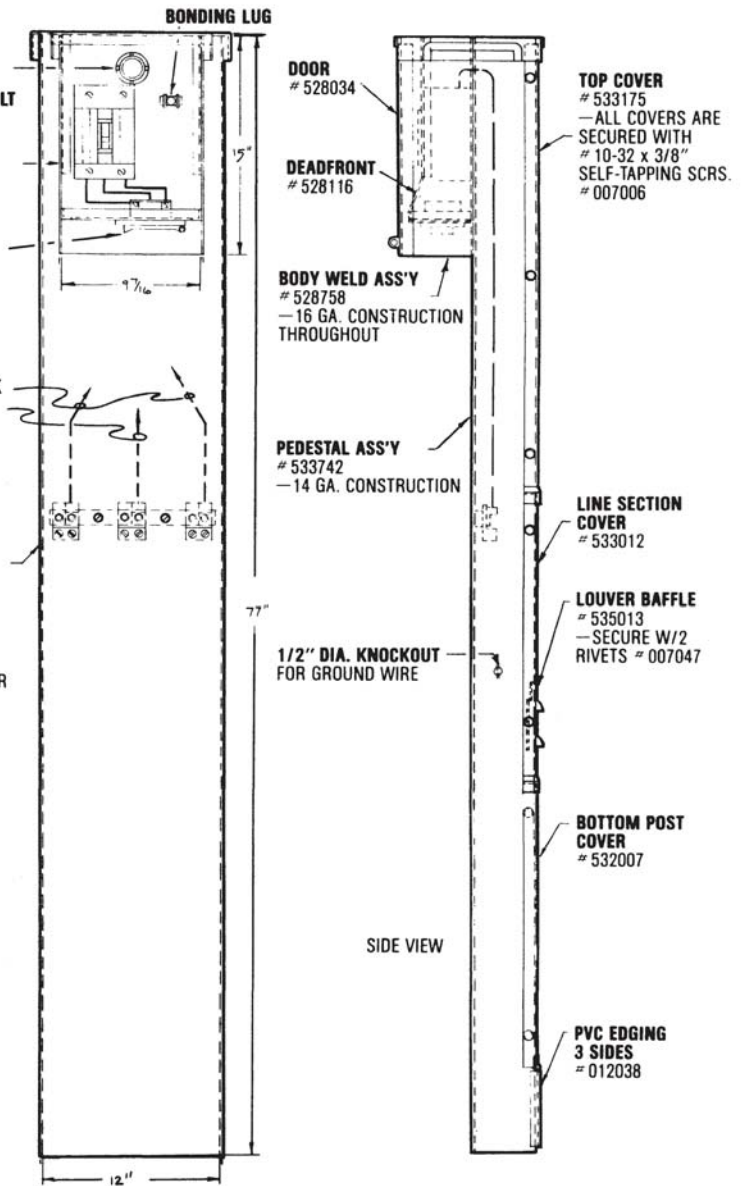
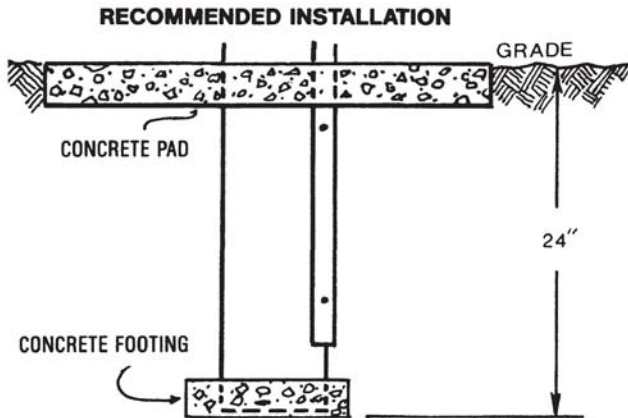
**RECEPT. PLATE**  
# 528116

**30 AMP-4 WIRE RECEPTACLE—"HUBBELLOCK"**  
# 002045 - WITH WEATHERPROOF COVER & GASKET  
# 002046

# 6-THHN WIRE-BLACK  
# 6-THHN WIRE-RED  
-TO CIRCUIT BRKR.

**LANDING LUG ASS'Y**  
# 533734  
- SECURE TO BODY W/ # 12-24 x 3/8" RND. HD- SCR  
# 008113

**REAR VIEW**  
DEADFRONT & DOOR NOT SHOWN IN THIS VIEW.



Tel: 866-MY-MYERS Fax: 951-520-1961  
www.myerspowerproducts.com